

eLEVATE™

ENT SYSTEM

Heightened Performance
Enhanced Comfort



HEAD & NECK SURGERY • LARYNGOLOGY



The **ELEVATE™ ENT System** is an all-new fiber and instrumentation solution customized for Head & Neck Surgeons and Laryngologists. The system delivers heightened performance and enhanced comfort. [Elevate your standard of care today.](#)



1-step fiber loading reduces set-up complexity and ensures correct fiber placement in hand piece

Ergonomically inspired design incorporates counterweight technology to reduce surgeon fatigue and improve comfort

Designed for "pencil grip" technique used in delicate dissections

Graduated cannula design aids in keeping the visual field clear



Tip design enables tissue manipulation while providing enhanced haptic feedback

A variety of bend angles ensure access to hard to reach anatomy

The OmniGuide Surgical Precision Energy Cutting Tool

Advantages

- Increased precision
- Reduced site trauma
- Improved access
- Versatile tissue effects

Precision

OmniGuide Surgical's CO₂ energy cutting tool has been shown to cause significantly less thermal damage when compared to other advanced energy devices.¹

Figures: Histological assessment of thermal injury of monopolar vs. OmniGuide CO₂ Fiber²



FIGURE 1: Monopolar cautery, from left to right, 35, 30, and 25 Malis. Insert shows specimen excised at Malis.

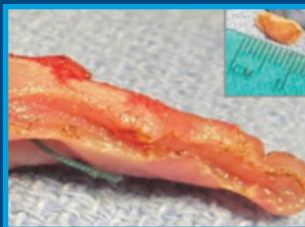


FIGURE 2: Two adjacent cuts using the CO₂ laser fiber at 15W, 70 PSI. Insert shows one of the specimens excised.



FIGURE 3: H&E specimen of monopolar electrocautery tongue lesion produced at 40 Malis. Total collateral damaged area is highlighted. Image analyzed at 4x magnification.

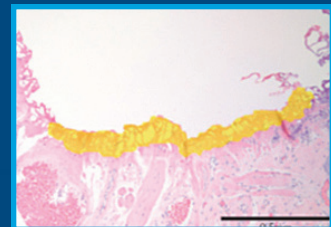


FIGURE 4: H&E specimen of CO₂ laser fiber tongue lesion produced at 20W 70 PSI. Total collateral damaged area is highlighted. Image analyzed at 10x magnification.

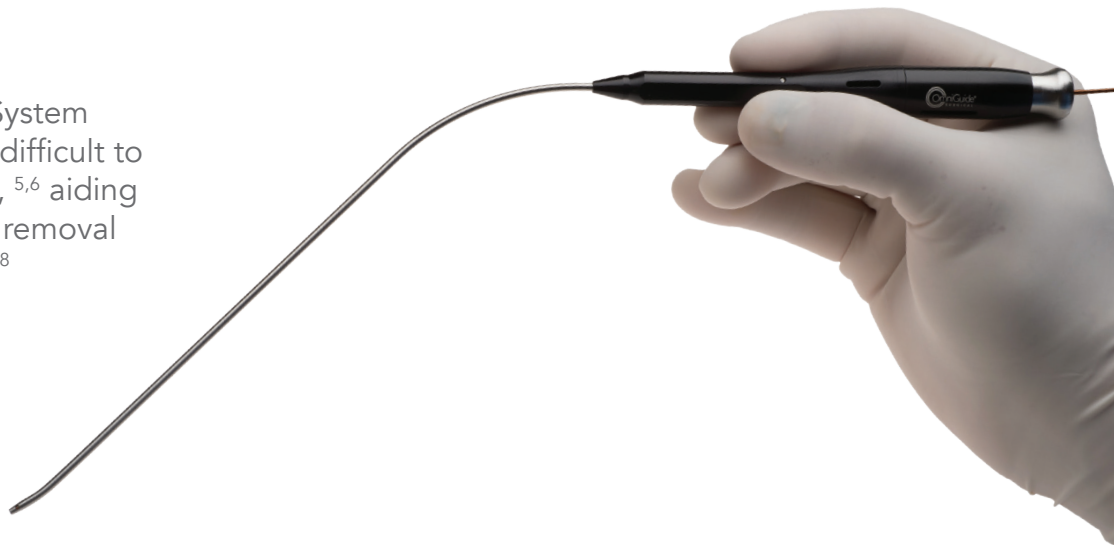
Reduced Site Trauma

Reduced thermal spread can improve swallowing function and lower need for tracheostomy and G-Tube.³



Access

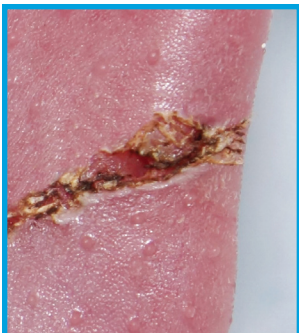
The OmniGuide Surgical System offers improved access to difficult to reach, countered anatomy,^{5,6} aiding in more complete disease removal and reduced recurrence.^{7,8}



Versatility

Properties of a divergent beam and variable power settings deliver an all-in-one tool for surgical efficiency. The system has the ability to provide hemostatic cutting, ablation, coagulation and blunt dissection.^{7,8}

Cutting

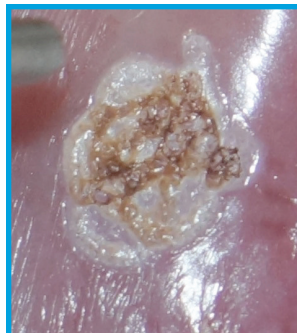


BeamPath™ ENT - L Fiber

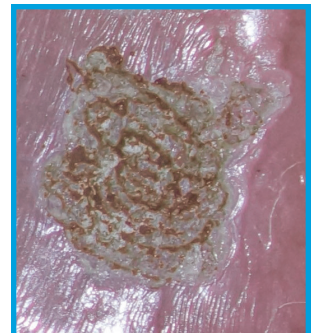


ELEVATE ELITE™ ENT Fiber

Ablation

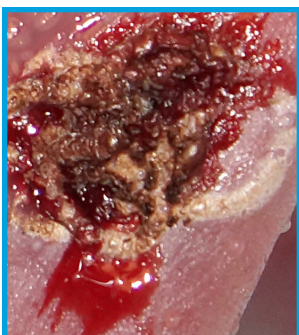


BeamPath™ ENT - L Fiber



ELEVATE ELITE™ ENT Fiber

Coagulation

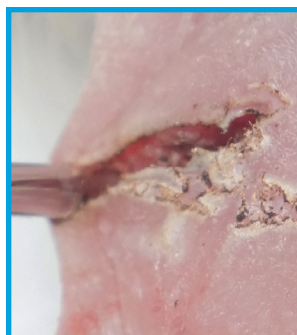


BeamPath™ ENT - L Fiber

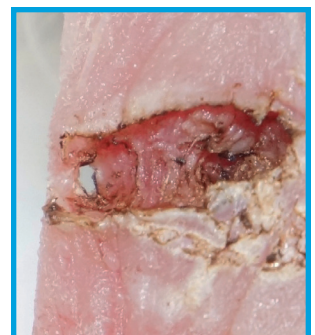


ELEVATE ELITE™ ENT Fiber

Blunt Dissection Instrumentation Tip



BeamPath™ ENT - L Fiber



ELEVATE ELITE™ ENT Fiber

Figures: Live porcine model, 15W continuous wave cutting comparing legacy BeamPath ENT System to the ELEVATE ENT System

eLEVATE™

ENT SYSTEM

ENT SYSTEM FOR
HEAD & NECK SURGERY

The **ELEVATE ENT System** provides Head & Neck Surgeons the ability to comfortably access hard-to-reach anatomy while delivering rapid cutting, ablation, coagulation and blunt dissection. **Elevate your energy source today.**

Powerful Precision

- The innovated ELEVATE ELITE™ ENT Fiber offers a 40% increase in cutting speed.¹
- OmniGuide Surgical's precision energy cutting tool has been shown to cause 10X less thermal damage when compared to other market-leading resection tools.²

Access & Comfort

- Improved graduated cannula with enhanced bend angles aid in accessing difficult-to-reach anatomy to enable more complete disease removal.^{5,6}
- Ergonomically inspired design incorporates counterweight technology to reduce surgeon fatigue and improve comfort.

Easier Histological Assessment

- Specimen Integrity: Preserve histology by creating smaller coagulation zone and width of thermal injury.^{3,4}





ELEVATE ELITE™ ENT Fiber

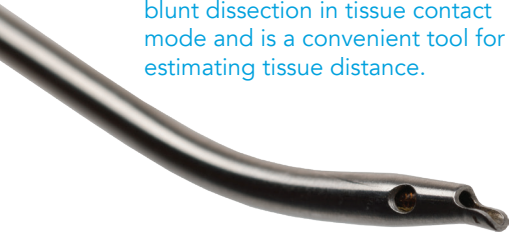
The improved flexible fiber technology from OmniGuide Surgical offers up to 40% greater cutting speed while improving fiber robustness by 4X.⁹

ELEVATE ENT Instrumentation

Customize your procedure today with new tips designed for blunt dissection coupled with a wide variety of angles and lengths that allow you to provide patient specific care.

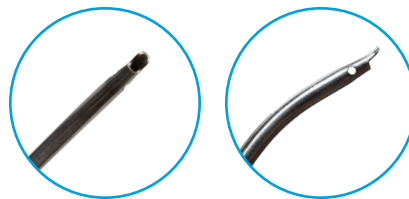
Blunt Dissection Tip

Innovative distal tip design enables blunt dissection in tissue contact mode and is a convenient tool for estimating tissue distance.



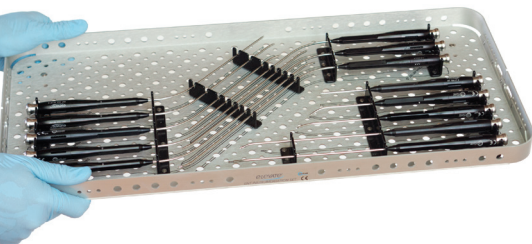
Enhanced Bend Angles

Understanding that no anatomy is the same, the instrumentation set offers a wide range of hand pieces with an assortment of bend angles to meet your surgical needs.

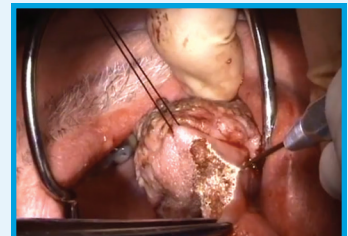


Variety of Lengths

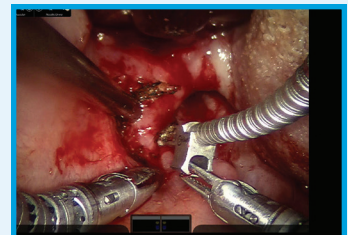
The ELEVATE ENT Instrumentation Set comes standard with hand pieces ranging from 5 cm to 22 cm in length, improving your access to a variety of anatomic structures.



Procedure Highlights



Partial Glossectomy



Base of Tongue



Supraglottic Resection*

Elevate your standard of care today.

Visit omni-guide.com/Elevate to learn more or contact customer service today.

Ordering Information

OmniGuide Surgical ENT Product Solutions



CATALOG # PRODUCT NAME DESCRIPTION

Head & Neck / Laryngology Instrumentation



322001	ELEVATE ELITE ENT Fiber	High performance ENT fiber -1 fiber, 180 cm length
321015	ELEVATE ENT Instrumentation Set (13 piece)	13 piece tray set (includes pn/ 1e. 321017, 321018, 321003, 321019, 321004, 321005, 321006, 321007, 321008, 321009, 321010, 321011, 321012)
321017	ELEVATE ENT Handpiece 5 cm 0° -S	5 cm, 0° distal bend w/spatula
321018	ELEVATE ENT Handpiece 5 cm 25° -S	5 cm, 25° distal bend w/spatula
321002	ELEVATE ENT Handpiece 7 cm 0° -S	7 cm, 0° distal bend w/spatula
321003	ELEVATE ENT Handpiece 7 cm 25° -S	7 cm, 25° distal bend w/spatula
321019	ELEVATE ENT Handpiece 14 cm 21° -S	14 cm, 21° distal bend w/spatula
321004	ELEVATE ENT Handpiece 15 cm 25° -S	15 cm, 25° distal bend w/spatula
321005	ELEVATE ENT Handpiece 17 cm 45°/0° -S	17 cm, 45° proximal bend, 0° distal bend, w/spatula
321006	ELEVATE ENT Handpiece 17 cm 45°/30°	17 cm, 45° proximal bend, 30° distal bend, no spatula
321007	ELEVATE ENT Handpiece 17 cm 45°/15°	17 cm, 45° proximal bend, 15° distal bend, no spatula
321008	ELEVATE ENT Handpiece 22 cm 45°/0° -S	22 cm, 45° proximal bend, 0° distal bend, w/spatula
321009	ELEVATE ENT Handpiece 22 cm 45°/30°	22 cm, 45° proximal bend, 30° distal bend, no spatula
321010	ELEVATE ENT Handpiece 22 cm 45°/15°	22 cm, 45° proximal bend, 15° distal bend, no spatula
321011	ELEVATE ENT Handpiece 22 cm 45°/30° -S	22 cm, 45° proximal bend, 30° distal bend, w/spatula*
321012	ELEVATE ENT Handpiece 22 cm 45°/15° -S	22 cm, 45° proximal bend, 15° distal bend, w/spatula*
321014	ELEVATE ENT Instrumentation Tray	Replacement autoclave tray

Robotic Instrumentation



BP-ROBOTIC	BeamPath Robotic Fiber	Robotic Fiber - 1 Fiber, 180 cm length
FLEXGUIDE-ULTRA	BeamPath Robotic Fiber Conduit	Compatible with 8mm large needle driver or 5 mm need driver
FLEX-ULTRA-SET	BeamPath Robotic Fiber Conduit Set	Includes one FlexGuide ULTRA Fiber Conduit and autoclave tray
FLEX-TRAY	FlexGuide ULTRA Tray	Replacement autoclave tray

Fiber Enabled Laser System



420060-AA	BEACON 60W Laser with Articulating Arm	Portable CO ² laser, maximum power 60 W
420030-AA	BEACON 30W Laser with Articulating Arm	Portable CO ² laser, maximum power 30 W
ACC-GFU-100	Gas Filter Unit	100 PSI sterilized gas filter units, pack of 10
ACC-SH-510	Helium Gas Cylinder	Helium gas tank (510 L), set of 4

References

1. Ryan et al, J Neurosurg, 2010; 112(2): 434–43
2. Head & Neck White Paper Archive, Feb 2010, sponsored by OmniGuide, Inc.
3. Gottschlich and Ambrosch, Operative Techniques in Otolaryngology (2004) 15, 252–255
4. Rich et al, Laryngoscope July 2009
5. Hanby et al, World Journal of Surgical Oncology 2011, 9:83
6. Holsinger et al, Laryngoscope 116: July 2006
7. Jacobson et al, Otolaryngology- Head and Neck Surgery (2006) 135, 469–470
8. Shires et al, International Journal of Pediatric Otorhinolaryngology (2009) 73, 67–72
9. As compared to previous models of the BeamPath Fiber; performance data on file

For more information or to order call 888-666-4484 / 617-551-8444 or visit www.omni-guide.com

OmniGuide is a registered trademark of OmniGuide, Inc. All content is copyright of OmniGuide, Inc. © 2024 See www.omni-guide.com/patents for information about the coverage of this OmniGuide® product by U.S. and/or foreign patent rights. R1-0168-036-05-01 Rev. 4/4/24

☎ 888.666.4484 | 617.551.8444
✉ customerservice@omni-guide.com
🌐 www.omni-guide.com

